

FREEMOTION®

# u22.9 UPRIGHT BIKE

MODEL # **FMEX82420**

## *22 SERIES POWERED BY IFIT®*

Exclusively on content-driven cardio machines from Freemotion, your members can explore the world through thousands of coach-led workouts, right from the cardio floor. Powered by iFit, the 22 SERIES keeps users engaged with vivid imagery, motivational coaching, and auto-adjusting technology that delivers an immersive and interactive cardio experience.

Offer your members the consistent, effective, and low-impact cardio solution found on the Freemotion Upright Bike, while allowing them to cycle the world, right from the cardio floor.



## u22.9 UPRIGHT BIKE

### PRODUCT FEATURES

#### CONSISTENT CYCLING SOLUTION

From the Quicklift™ Overmolded Seat to the Step Thru™ design, this bike is poised to be your go-to cardio solution.

#### THOUSANDS OF COACH-LED WORKOUTS

Give your members access to an expansive library of on-demand workouts led by expert fitness coaches from around the world. Users can search or sort by location, trainer, exercise type, workout duration, intensity, and more.

#### WORLD-RENOWNED FITNESS COACHES

With a hand-selected compilation of more than 100 Olympic champions, celebrity trainers, physical therapists, marathoners, expert cyclists and location guides leading workouts, your members will quickly discover their new favorite trainer.

#### GLOBAL WORKOUTS (40+ COUNTRIES, 7 CONTINENTS)

Empower members to explore the world without leaving the room with thousands of inspiring training videos beautifully filmed in stunning locations around the globe, including 40+ countries and all 7 continents.

#### HIGH-ENERGY STUDIO CLASSES

Expand your timetable and offer your members the hype of a participant-filled, high-intensity studio class, when it's most convenient for them.

#### GOOGLE MAPS™

Take a ride anywhere in the world with Google Maps, powered by iFit. Your members can map a route, and iFit will take them there.

#### AUTO-ADJUSTING TECHNOLOGY

Each interactive workout allows the on-screen coach to remotely adjust the resistance of the machine to mirror the on-screen content, creating an immersive and engaging training experience.

#### HIGH-DEFINITION DISPLAY

An immersive, high-definition 22-in (55 cm) capacitive touchscreen delivers stunning imagery that transports the user to exotic locations around the globe.

### SPECIFICATIONS

Display Type	22 in (55 cm) HD Capacitive Touchscreen Built-in TV Tuner* (Available Soon)
Workouts	Thousands of Coach-Led, Unlimited with Google Maps
Featured Languages	EN, also DE, ES, FR, IT, PT, RU, ZH
Entertainment	HDMI, MPEG-2, MPEG-4 US & Canada: H.264 (AVC) International: H.265 (HEVC)
Electronic Readouts	Speed, Resistance, RPM, Distance, Calories, Time, Heart Rate, Watts & Pace
Audio Connections	Bluetooth, 3.5 mm headphone jack
Connectivity	Ethernet or Wifi minimum: 10 Mbps per unit (Dedicated Ethernet recommended)
Resistance System	SMR™ Silent Magnetic Resistance
Resistance Levels	1-24 Levels
Heart Rate Monitoring	Dual-Grip EKG Pulse Sensors, ANT+ and Polar Compatible
Accessories Holder(s)	Phone/Accessories Tray, Bottle Holder
Transport Wheels	2 in (5 cm) Plastic Wheels
Supported Power	120 VAC, 2 Amp 240 VAC, 1 Amp
Maximum User Weight	400 lbs (182 kg)
Product Weight	176.4 lbs (80 kg)
Product Dimensions (L x W x H)	53 x 24 x 58 in (134.6 x 60.9 x 147.3 cm)
Shipping Weight	206 lbs (93.4 kg)
Shipping Dimensions (L x W x H)	52 x 15.4 x 33 in (132 x 39 x 83.8 cm)
Certifications	CE, FCC/IC, BQB

\*NTSC, PAL, SECAM etc.

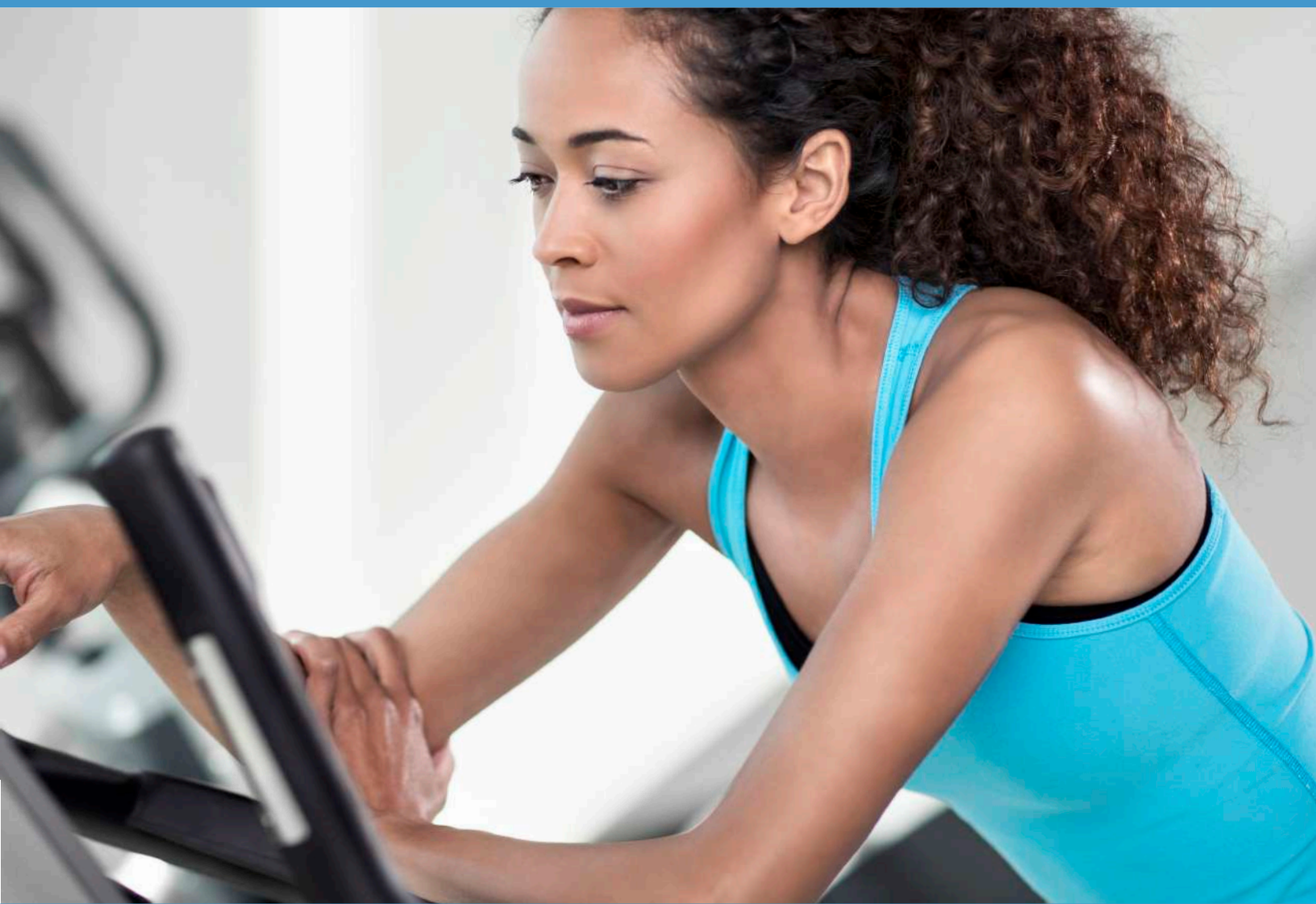
# WARRANTIES

<b>CARDIO: HIGH-USAGE - 22, 10, &amp; 8 SERIES</b>	<b>US &amp; CANADA</b>	<b>INTERNATIONAL</b>
Frame (not including coatings), Drive Motor	7 Years	7 Years
Parts and Console	2 Years	2 Years
Labor	1 Year	1 Year
Cosmetic & Wear Items*	6 Months	6 Months
<b>CARDIO: LOW-USAGE - 22, 10, &amp; 8 SERIES**</b>	<b>US &amp; CANADA</b>	<b>INTERNATIONAL</b>
Frame (not including coatings), Drive Motor	7 Years	7 Years
Parts and Console	3 Years	3 Years
Labor	3 Years	1 Year
Cosmetic & Wear Items*	6 Months	6 Months
<b>TV ATTACHMENTS</b>	<b>US &amp; CANADA</b>	<b>INTERNATIONAL</b>
MYE Digital LCD TV	3 Years	3 Years
MYE TV Controller & Wireless Receiver	2 Years	2 Years
MYE Wireless Transmitter	5 Years	5 Years
<b>INDOOR BIKES</b>	<b>US &amp; CANADA</b>	<b>INTERNATIONAL</b>
Frame (not including coatings)	7 Years	7 Years
Belt	5 Years	5 Years
Parts and Console	2 Years	2 Years
Labor	1 Year	1 Year
Cosmetic & Wear Items*	6 Months	6 Months
<b>FUSION</b>	<b>US &amp; CANADA</b>	<b>INTERNATIONAL</b>
Frame (not including coatings)	10 Years	10 Years
Parts	2 Years	2 Years
Ropes and Labor	1 Year	1 Year
Cosmetic & Wear Items*	6 Months	6 Months
<b>STRENGTH/BENCHES/RIGS/RACKS/ATTACHMENTS</b>	<b>US &amp; CANADA</b>	<b>INTERNATIONAL</b>
Frame (not including coatings)	10 Years	10 Years
Parts	3 Years	3 Years
Cables and Labor	1 Year	1 Year
Cosmetic & Wear Items*	6 Months	6 Months
Upholstery & Padding	120 Days	120 Days
<b>FREE WEIGHTS</b>	<b>US &amp; CANADA</b>	<b>INTERNATIONAL</b>
Urethane-coated Weights (repair or replace at our discretion)	3 Years	3 Years
Rubber-coated Weights (repair or replace at our discretion)	2 Years	2 Years

\*Includes Non-warning Decals, Deck Rails, Pulse Grips, USB, Audio Jack, Handrails, Motor Hood, Fan Levers, Water Bottle Holders, Pedals, Pedal Straps, Seats, Handles/Levers/Knobs, Hand Grips, Removable Trays, Weight Pins, Springs, Belts (except Walking Belts), Accessories, Rust on Any Metal Components.

\*\*For non-dues paying facilities with machine usage of 6 hours or less per day.





## *SPECIFICATION REQUIREMENTS*

### ***POWER REQUIREMENTS***

ALL Freemotion Bikes and Ellipticals can be powered by a standard 15 Amp circuit. A maximum of five (5) bikes and/or ellipticals may be safely run on a single circuit.

### ***NETWORK CONNECTIVITY***

Freemotion requires a minimum of Category 5e (Cat5e) twisted pair ethernet cable. Freemotion recommends Category 6 (Cat6) twisted pair ethernet cable to ensure stable and efficient connection.

Freemotion requires all switching devices to be capable of handling up to 10/100/1000 Mbps, and a dedicated network connection for each connected fitness product. All connected products, whether on WiFi or via Ethernet, should be on a secure and protected network capable of providing a minimum bandwidth of 10 Mbps per unit.